



# Opus 800

All gas power ratings are nominal values.



## Gas Salamander Grills

- Powerful, highly efficient ceramic plaque burners for reliability and rapid heat up
- Three independently controlled heat zones on the OG8302 for maximum versatility
- Four shelf positions with horizontal or angled settings
- OG8302 is GN 1/1 compatible
- Enamelled front for durability
- Flame failure protection

### Inclusive Accessories

- Reversible cast aluminium branding plate, with removable fat collection container (OG8302 only)



Gas salamander							
MODEL	PRICE £	PRICE €	H	W	D	POWER	WT
OG8301/N	£1789	€2058	450	800	438	6kW	48
OG8301/P	£1789	€2058	450	800	438	6.8kW	48

Gas salamander							
MODEL	PRICE £	PRICE €	H	W	D	POWER	WT
OG8302/N	£2834	€3260	495	900	548	8.7kW	73
OG8302/P	£2834	€3260	495	900	548	9kW	73

MODEL	PRICE £	PRICE €	DESCRIPTION
A OA8907	£544	€626	Floor stand for OG8301
A OA8912	£606	€697	Floor stand for OG8302
A OA8908	£394	€454	Bench stand for OG8301
A OA8918	£426	€490	Bench stand for OG8302
A OA8909	£179	€206	Wall bracket for OG8301
A OA8911	£220	€253	Wall bracket for OG8302
A OA8976	£183	€211	Branding plate for OG8301
A BR10	£244	€281	Additional branding plate for OG8302

Salamander floor stands cannot be supplied with castors

## Electric Salamander Grills

- Powerful heating elements, for reliability and rapid heat up
- Left and right independently controlled heat zones on the OE8303 for maximum versatility
- Four shelf positions with horizontal or angled settings
- OE8303 is GN 1/1 compatible
- Enamelled front for durability

### Inclusive Accessories

- Reversible cast aluminium branding plate, with removable fat collection container (OE8303 only)



Electric salamander							
MODEL	PRICE £	PRICE €	H	W	D	POWER	WT
*OE8304	£1579	€1816	400	800	415	4.4kW	46

Electric salamander							
MODEL	PRICE £	PRICE €	H	W	D	POWER	WT
*OE8303	£2386	€2744	510	890	520	5.4kW	72

MODEL	PRICE £	PRICE €	DESCRIPTION
A OA8907	£544	€626	Floor stand for OE8304
A OA8912	£606	€697	Floor stand for OE8303
A OA8908	£394	€454	Bench stand for OE8304
A OA8918	£426	€490	Bench stand for OE8303
A OA8909	£179	€206	Wall bracket for OE8304
A OA8911	£220	€253	Wall bracket for OE8303
A OA8976	£183	€211	Branding plate for OE8304
A BR10	£244	€281	Additional branding plate for OE8303

Salamander floor stands cannot be supplied with castors

## Electric Cook & Hold Salamander

The sophisticated Cook & Hold Salamander heats up in just eight seconds when the plate detection mechanism is activated by a plate or gastronorm pan. Once the food is cooked, the hold function will ensure food is kept warm but does not continue to cook until required for service. Once the plate is removed and the plate detection mechanism freed, the elements automatically switch off saving energy.

- Cook and hold function
- Fast heat up 'Hi-Light' elements - ready to cook in just eight seconds
- Self-balancing height adjustable grill hood for easy operation
- Three independently controlled heating zones for maximum flexibility
- Touchpad control with digital display of time and power settings
- 20 minute audible timer
- GN1/1 compatible
- Suitable for wall or bench mounting
- Suitable for single or three phase installation

**2 YEAR** UK parts and labour warranty | Export parts warranty  
on all Lincat products



Electric cook and hold salamander							
MODEL	PRICE £	PRICE €	H	W	D	POWER	WT
*OE8306	£3289	€3783	544	600	562	4.5kW	89

Supplied on height adjustable 25-45mm high legs

MODEL	PRICE £	PRICE €	DESCRIPTION
A BR75	£186	€214	Wall bracket

\* Please refer to pages L104 to L105 for electricity supply requirements



# Opus 800

All gas power ratings are nominal values. Gas counter top equipment is supplied on 150mm high legs in compliance with CE legislation.  
Electric counter top equipment is supplied on height adjustable 55-70mm high legs.

## Gas Griddles

- Maximised cooking area, griddle plates sit flush to the sides of the unit
- Left and right independently controlled heat zones for flexibility and economy during quiet periods
- Precise thermostatic control from 90°C - 280°C for consistent results and economical operation
- Half-ribbed plate option (/R), for attractive branding presentation marks

- Chrome plate option (/C), easy to clean and reduced heat radiation for a comfortable working environment and reduced energy costs
- Convenient piezo ignition and pilot burners for stand-by operation
- Flame failure protection

### Inclusive Accessories

- Scraper (not for chrome models)



Gas griddles (machined steel)							
MODEL	PRICE £	PRICE €	H	W	D	POWER	WT
OG8201/N	£2988	€3437	532	600	800	15.5kW	93
OG8201/P	£2988	€3437	532	600	800	15.5kW	93
OG8202/N	£3404	€3915	532	900	800	23kW	124
OG8202/P	£3404	€3915	532	900	800	23kW	124

Gas griddles (chrome)							
MODEL	PRICE £	PRICE €	H	W	D	POWER	WT
OG8201/C/N	£4680	€5382	532	600	800	15.5kW	93
OG8201/C/P	£4680	€5382	532	600	800	15.5kW	93
OG8202/C/N	£5480	€6302	532	900	800	23kW	124
OG8202/C/P	£5480	€6302	532	900	800	23kW	124

Gas griddles (half-ribbed steel)							
MODEL	PRICE £	PRICE €	H	W	D	POWER	WT
OG8201/R/N	£3276	€3768	532	600	800	15.5kW	90
OG8201/R/P	£3276	€3768	532	600	800	15.5kW	90
OG8202/R/N	£3770	€4336	532	900	800	23kW	140
OG8202/R/P	£3770	€4336	532	900	800	23kW	140

MODEL	PRICE £	PRICE €	DESCRIPTION
A OA8972	£574	€661	Pedestal with doors for OG8201
A OA8972/C	£574	€661	Pedestal with doors and castors for OG8201
A OA8917	£574	€661	Floor stand for OG8201
A OA8917/C	£574	€661	Floor stand with castors for OG8201
A OA8973	£624	€718	Pedestal with doors for OG8202
A OA8973/C	£624	€718	Pedestal with doors and castors for OG8202
A OA8914	£624	€718	Floor stand for OG8202
A OA8914/C	£624	€718	Floor stand with castors for OG8202

## Electric Griddles

- Maximised cooking area, griddle plates sit flush to the sides of the unit
- Left and right independently controlled heat zones for flexibility and economy during quiet periods
- Precise thermostatic control from 90°C - 300°C for consistent results and economical operation
- Half-ribbed plate option (/R), for attractive branding presentation marks

- Chrome plate option (/C), easy to clean and reduced heat radiation for a comfortable working environment and reduced energy costs

### Inclusive Accessories

- Scraper (not for chrome models)



Electric griddles (machined steel)							
MODEL	PRICE £	PRICE €	H	W	D	POWER	WT
*OE8205	£2123	€2442	428	600	800	8kW	93
*OE8206	£2515	€2893	428	900	800	12kW	128

Electric griddles (chrome)							
MODEL	PRICE £	PRICE €	H	W	D	POWER	WT
*OE8205/C	£3783	€4351	428	600	800	8kW	95
*OE8206/C	£4550	€5233	428	900	800	12kW	134

Electric griddles (half-ribbed steel)							
MODEL	PRICE £	PRICE €	H	W	D	POWER	WT
*OE8205/R	£2380	€2737	428	600	800	8kW	92
*OE8206/R	£2840	€3266	428	900	800	12kW	124

MODEL	PRICE £	PRICE €	DESCRIPTION
A OA8972	£574	€661	Pedestal with doors for OE8205
A OA8972/C	£574	€661	Pedestal with doors and castors for OE8205
A OA8917	£574	€661	Floor stand for OE8205
A OA8917/C	£574	€661	Floor stand with castors for OE8205
A OA8973	£624	€718	Pedestal with doors for OE8206
A OA8973/C	£624	€718	Pedestal with doors and castors for OE8206
A OA8914	£624	€718	Floor stand for OE8206
A OA8914/C	£624	€718	Floor stand with castors for OE8206

## Electric Clam Griddles

Opus 800 clam griddles cook food up to three times as quickly as a standard griddle. Double griddle plates heat both sides of the food simultaneously, delivering fast, even and repeatable results

- Precise thermostatic temperature control for consistent results and economical operation
- Independently controlled cooking zones for greater flexibility and economy during quieter periods

- Digital timer on each clam plate ensures repeatable results
- Ribbed plate option (/R), for attractive branding presentation marks

### Inclusive Accessories

- Scraper
- PTFE non-stick sheets

### Key

H = Height (mm)  
W = Width (mm)  
D = Depth (mm)  
WT = Packed Weight in kg



Electric clam griddles (flat upper plate)							
MODEL	PRICE £	PRICE €	H	W	D	POWER	WT
*OE8211	£6734	€7745	542	400	800	8.6kW	95
*OE8210	£10626	€12220	542	800	800	17.2kW	192

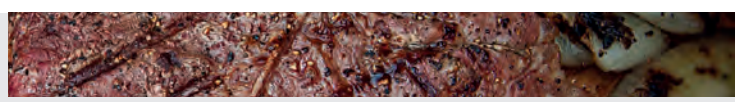
Electric clam griddles (ribbed upper plate)							
MODEL	PRICE £	PRICE €	H	W	D	POWER	WT
*OE8211/R	£6778	€7795	542	400	800	8.6kW	94
*OE8210/R	£10665	€12265	542	800	800	17.2kW	167

Electric clam griddles (1 x flat and 1 x ribbed upper plate)							
MODEL	PRICE £	PRICE €	H	W	D	POWER	WT
*OE8210/FR	£10707	€12314	542	800	800	17.2kW	170

MODEL	PRICE £	PRICE €	DESCRIPTION
A OA8960	£42	€49	Plate height adjuster (per plate)
A TFS01	£22	€26	Teflon sheet top plate
S TFS02	£15	€18	Teflon sheet hangers (1 pair)
S TFS03	£21	€25	Teflon sheet base plate 800mm wide (1 sheet)
S TFS04	£12	€14	Teflon sheet base plate 400mm wide (1 sheet)
A OA8971	£541	€623	Pedestal with doors for OE8211
A OA8921	£541	€623	Floor stand for OE8211
A OA8974	£606	€697	Pedestal with doors for OE8210
A OA8974/C	£606	€697	Pedestal with doors and castors for OE8210
A OA8956	£606	€697	Floor stand for OE8210
A OA8956/C	£606	€697	Floor stand with castors for OE8210
A OA8988	£55	€64	Clam adjustment bars 17mm

\* Please refer to pages L104 to L105 for electricity supply requirements

# Opus 800



All gas power ratings are nominal values. Gas counter top equipment is supplied on 150mm high legs in compliance with CE legislation. Electric counter top equipment is supplied on height adjustable 55-70mm high legs.

## Gas Chargrills

- Powerful, highly efficient infra-red ceramic plaque burners for fast cooking and significant energy efficiency
- Independently controlled multiple heat zones (3 in OG8401, 5 in OG8402, 7 in OG8403) for maximum versatility
- Flame failure protection
- Heavy-duty cast iron branding grids with reversible design, for uninterrupted cooking and self cleaning at maximum power
- Unique design of radiants, deliver the ideal amount of flaring for that delicious chargrilled taste, without the mess of lava rock or charcoal
- Heavy duty radiant caps (consumable items) protect burners

### Inclusive Accessories

- Branding grid scraper
- Cleaning spatula



Gas chargrill (600mm wide)							
MODEL	PRICE £	PRICE €	H	W	D	POWER	WT
OG8401/N	£3118	€3586	653	600	806	13.8kW	92
OG8401/P	£3118	€3586	653	600	806	12.6kW	92

Gas chargrill (900mm wide)							
MODEL	PRICE £	PRICE €	H	W	D	POWER	WT
OG8402/N	£4042	€4649	653	900	806	23kW	133
OG8402/P	£4042	€4649	653	900	806	23kW	133

Gas chargrill (1200mm wide)							
MODEL	PRICE £	PRICE €	H	W	D	POWER	WT
OG8403/N	£5154	€5928	653	1200	806	32.2kW	173
OG8403/P	£5154	€5928	653	1200	806	29.4kW	173

MODEL	PRICE £	PRICE €	DESCRIPTION
OA8950	£574	€661	Floor stand for OG8401
OA8950/C	£574	€661	Floor stand with castors for OG8401
OA8989	£426	€490	Holding shelf for OG8401

MODEL	PRICE £	PRICE €	DESCRIPTION
OA8951	£624	€718	Floor stand for OG8402
OA8951/C	£624	€718	Floor stand with castors for OG8402
OA8990	£574	€661	Holding shelf for OG8402

MODEL	PRICE £	PRICE €	DESCRIPTION
OA8952	£755	€869	Floor stand for OG8403
OA8989	£426	€490	Holding shelf for OG8403

## SYNERGY™ grill technology



Lincat is delighted to be able to offer the revolutionary Synergy Grill technology as a suited solution within our Opus 800 Series.

Pioneering, award-winning technology Synergy Grill has revolutionised the catering industry. Combining high power with low energy consumption, Synergy Grills enable you to prepare food faster at less than half the energy costs. Fat atomising technology means there's no fat tray to clean and best of all, it creates seriously succulent food.

- Award winning Synergy Grill technology in an Opus 800 series chassis
- Suites with equipment in the Opus 800 series
- Patented award-winning Synergy Grill technology designed around its gas burner system, working at incredibly hot temperatures yet uses an average of 59% less gas than a standard grill
- Gently smokes the food giving you incredible flavour whilst giving clear contrasting bar-marks
- Quickest grill on the market to clean, the fat is atomised on ceramic base plates, once cold, you can simply vacuum out the dust that's left
- No fat means no fat tray to clean, fat atomising technology means there's no fat tray to clean and best of all, it creates seriously succulent food
- The simplest grill on the market to operate, with no thermocouples to replace and operated by a simple rocker switch
- Safety is paramount, one of the safest units to operate



Synergy Grill							
MODEL	PRICE £	PRICE €	H	W	D	POWER	WT
OG8410/N	£6125	€7044	900	600	800	5.7kW	106
OG8410/P	£6125	€7044	900	600	800	5.7kW	106
OG8411/N	£8273	€9514	900	900	800	11.4kW	151
OG8411/P	£8273	€9514	900	900	800	11.4kW	151

MODEL	PRICE £	PRICE €	DESCRIPTION
OA8991	£574	€661	Floor Stand for OG8410
OA8991/C	£574	€661	Floor Stand for OG8410
OA8992	£624	€718	Floor Stand for OG8411
OA8992/C	£624	€718	Floor Stand for OG8411

### Product Codes

/N = natural gas /P = propane gas Btu/hr = kW x 3412

Price includes grill on 150mm legs, slow cook shelf, resting shelf and garnish rail

\* Please refer to pages L104 to L105 for electricity supply requirements



# Opus 800

Electric counter top equipment is supplied on height adjustable 55-70mm high legs.

## Electric Chargrills

- Removable, durable, segmented cast iron grids impart attractive branding marks to food
- Independently controlled multiple heat zones (3 in OE8405, and 6 in OE8406) for maximum versatility • Controlled flaring gives that distinctive chargrilled flavour
- Hinging, interlocked elements and integral water bath makes cleaning easier
- Water bath provides humidity, keeping food succulent and reducing shrinkage

- Plumbed to water supply for quick and easy filling of water bath with alternative manual-fill facility
- High temperature safety cut-out for protection if water bath runs dry

### Inclusive Accessories

- Grid cleaning tool
- Branding iron lifting rod



Electric chargrill (600mm wide)							
MODEL	PRICE £	PRICE €	H	W	D	POWER	WT
*OE8405	£2655	€3054	415	600	817	8.4kW	69

Electric chargrill (900mm wide)							
MODEL	PRICE £	PRICE €	H	W	D	POWER	WT
*OE8406	£3650	€4198	415	900	817	12.4kW	73

MODEL	PRICE £	PRICE €	DESCRIPTION
A OA8972	£574	€661	Pedestal with doors
A OA8972/C	£574	€661	Pedestal with doors and castors
A OA8917	£574	€661	Floor stand
A OA8917/C	£574	€661	Floor stand with castors
A OA8986	£523	€602	Keep warm shelf
A OA8987	£136	€157	Condiment holder
A OA8959	£56	€65	Tool holder accessory

MODEL	PRICE £	PRICE €	DESCRIPTION
A OA8973	£624	€718	Pedestal with doors
A OA8973/C	£624	€718	Pedestal with doors and castors
A OA8914	£624	€718	Floor stand
A OA8914/C	£624	€718	Floor stand with castors
A OA8959	£56	€65	Tool holder accessory
			Suitable accessory for all Opus 800 products

## Electric Direct Cook Chargrills

- Create perfectly cooked, expertly branded burgers and steaks
- As food is cooked directly on the elements, there's no need for separate branding bars or grids
- Powerful elements are designed for rapid heat-up and a consistent temperature across the whole cooking surface
- Independently-controlled elements on the OE8414 mean one side can be switched off during quieter service periods to save energy

- After service, the unit can be turned on full power for 15 minutes to burn off fat and debris. After this, any remaining debris can be removed using the tool supplied
- Fully removable tank liner for easy cleaning.



Electric chargrill (600mm wide)							
MODEL	PRICE £	PRICE €	H	W	D	POWER	WT
*OE8413	£3331	€3831	592	600	800	8.4kW	69

Electric chargrill (900mm wide)							
MODEL	PRICE £	PRICE €	H	W	D	POWER	WT
*OE8414	£4675	€5377	592	900	800	13.4kW	90

MODEL	PRICE £	PRICE €	DESCRIPTION
A OA8991	£574	€661	Floor stand
A OA8991/C	£574	€661	Floor stand with castors
A OA8989	£426	€490	Keep warm shelf
A OA9002	£186	€214	Condiment holder

MODEL	PRICE £	PRICE €	DESCRIPTION
A OA8992	£624	€718	Floor stand
A OA8992/C	£624	€718	Floor stand with castors
A OA8990	£574	€661	Keep warm shelf
A OA9003	£199	€229	Condiment holder

# SILVERLINK 600

All gas power ratings are nominal values.



## Electric Salamander Grill

- Even heat distribution - for perfect grilling
- Easy to clean stainless steel interior
- Five grill shelf positions
- Crumb tray and toasting grid included as standard



Electric salamander grill							
MODEL	PRICE £	PRICE €	H	W	D	POWER	WT
GR3	£494	€569	314	600	350	2.8kW	22

### Accessories for GR3

MODEL	PRICE £	PRICE €	DESCRIPTION	H
A BR15	£46	€53	Wall brackets	N/A
A ABP03	£241	€278	Single-sided alloy branding plate & drip tray	N/A
A GR3/WS	£150	€173	Wall shelf	N/A
A GR3/BS	£226	€260	Bench stand	350
A GR3/FS	£397	€457	Floor stand	1230

## Electric Adjustable Salamander Grills

- Ideal for grilling and gratination
- Smooth action and easy-lift grill hood
- Height markings and an audible timer to ensure consistent results
- Removable fat collection tray and chromed toasting rack included as standard
- 1/1 GN compatible



Electric adjustable salamander grill							
MODEL	PRICE £	PRICE €	H	W	D	POWER	WT
AS3	£1417	€1630	500	600	472	2.8kW	59
*AS4	£1512	€1739	500	600	472	4.5kW	59

MODEL	PRICE £	PRICE €	DESCRIPTION
A BR51	£67	€78	Wall mounting brackets

## Gas Salamander Grills

- Powerful ceramic plaque burners
- Vitreous enamelled interior and hood for easy cleaning
- Cool to the touch handles
- Model GR3N/P supplied with crumb tray and toasting grid as standard
- Model GR7N/P supplied with a double sided alloy branding plate and fat collection tray as standard



Gas salamander grill							
MODEL	PRICE £	PRICE €	H	W	D	POWER	WT
GR3/N	£1074	€1236	408	600	423	5kW	24
GR3/P	£1074	€1236	408	600	423	5kW	24

### Accessories for GR3/N and GR3/P

MODEL	PRICE £	PRICE €	DESCRIPTION	H
A ABP03	£241	€278	Single-sided alloy branding plate & drip tray	N/A
A GR3/WS	£150	€173	Wall shelf	N/A
A GR3/BS	£226	€260	Bench stand	350
A GR3/FS	£397	€457	Floor stand	1230



Gas salamander grill							
MODEL	PRICE £	PRICE €	H	W	D	POWER	WT
GR7/N	£1578	€1815	405	750	423	6.5kW	44
GR7/P	£1578	€1815	405	750	423	6.5kW	44

### Accessories for GR7/N and GR7/P

MODEL	PRICE £	PRICE €	DESCRIPTION	H
A BR39	£219	€252	Additional double-sided alloy branding plate	N/A
A GR7/WS	£178	€205	Wall shelf	N/A
A GR7/BS	£256	€295	Bench stand	350
A GR7/FS	£453	€521	Floor stand	1230

\* Please refer to pages L104 to L105 for electricity supply requirements



# SILVERLINK 600

All gas power ratings are nominal values. All Silverlink 600 counter top units when mounted on optional floor stands or pedestals provide a uniform nominal hob height of 900mm.

## Electric Griddles

- Solid 12mm thick machined steel plate ensures even heat distribution and excellent heat retention
- Fully-welded plates eliminate dirt traps
- Thermostatically controlled for consistent performance
- Models with extra power (/E) available



Machine steel plate griddles							
MODEL	PRICE £	PRICE €	H	W	D	POWER	WT
GS3	£554	€638	330	300	600	2kW	24
GS3/E	£820	€713	330	300	600	2.5kW	25
GS4	£654	€753	330	450	600	2.7kW	42
GS4/E	£711	€818	330	450	600	3.7kW	43
GS6	£749	€862	330	600	600	3kW	51
*HGS6S	£787	€906	330	600	620	4.5kW	53
*HGS6/T	£820	€943	330	600	620	4kW	55
*HGS6/T/E	£865	€995	330	600	620	5.6kW	55
*HGS7	£903	€1039	330	750	620	6kW	69
*HGS7/E	£942	€1084	330	750	620	7kW	67
*HGS9	£1081	€1244	330	900	620	8.6kW	81

‡ Dual zone

Hard chrome plate griddles							
MODEL	PRICE £	PRICE €	H	W	D	POWER	WT
GS3/C	£1258	€1447	330	300	600	2kW	24
GS4/C	£1467	€1688	330	450	600	2.7kW	43
GS6/C	£1689	€1943	330	600	600	3kW	56
*HGS6C/T	£1844	€2121	330	600	620	4kW	54
*HGS7/C	£2021	€2325	330	750	620	6kW	68

‡ Dual zone

Half-ribbed griddles							
MODEL	PRICE £	PRICE €	H	W	D	POWER	WT
*HGS6/TR	£937	€1078	330	600	620	4kW	53
*HGS6/TR/E	£985	€1133	330	600	620	5.6kW	53
*HGS7/R	£1025	€1179	330	750	620	6kW	69

‡ Dual zone

Fully-ribbed griddle							
MODEL	PRICE £	PRICE €	H	W	D	POWER	WT
*HGS6/TFR	£1096	€1261	330	600	620	4kW	54

‡ Dual zone

### Griddle splashbacks

MODEL	PRICE £	PRICE €	DESCRIPTION
A SB3	£79	€91	For GS3 griddles
A SB4	£89	€103	For GS4 griddles
A SB6	£91	€105	For GS6 griddles
A SB7	£98	€113	For GS7 griddles
A SB9	£101	€117	For GS9 griddles

Note: All splashbacks are 115mm high

### Key

H = Height (mm)  
W = Width (mm)  
D = Depth (mm)  
WT = Packed Weight in kg

## Gas Griddles

- Solid 12mm thick machined steel plate ensures even heat distribution and excellent heat retention
- Fully-welded plates eliminate dirt traps
- High and low heat settings for controlled cooking
- Piezo ignition and flame failure device for convenient and safe operation



Machine steel plate griddles							
MODEL	PRICE £	PRICE €	H	W	D	POWER	WT
GS4/N	£1102	€1268	415	450	650	5.4kW	49
GS4/P	£1102	€1268	415	450	650	5.5kW	49
HGS7/N	£1567	€1803	415	750	650	7.5kW	70
HGS7/P	£1567	€1803	415	750	650	8kW	70

‡ Dual zone

### Griddle splashbacks

MODEL	PRICE £	PRICE €	DESCRIPTION
A SB4	£89	€103	For GS4 griddles
A SB7	£98	€113	For GS7 griddles

Half-ribbed griddles							
MODEL	PRICE £	PRICE €	H	W	D	POWER	WT
HGS7/R/N	£1678	€1930	415	750	650	7.5kW	70
HGS7/R/P	£1678	€1930	415	750	650	8kW	70

‡ Dual zone

### Product Codes

/N = natural gas /P = propane gas Btu/hr = kW x 3412

# SILVERLINK 600



All gas power ratings are nominal values. All Silverlink 600 counter top units when mounted on optional floor stands or pedestals provide a uniform nominal hob height of 900mm.

## Gas Chargrills

- Heat transfer radiants eliminate the need for messy lava rock
- Removable branding grids, heat transfer radiants, fat collection drawer and debris collection tray for easy cleaning
- Adjustable cooking grid and variable heat control for maximum controllability
- Heat retaining cooking grids produces clean, sharp branding marks to enhance food presentation
- Twin heat zones



Gas chargrill							
MODEL	PRICE £	PRICE €	H	W	D	POWER	WT
CG4/N	£1186	€1364	414	450	652	16.4kW	36
CG4/P	£1186	€1364	414	450	652	17.6kW	36

Gas chargrill							
MODEL	PRICE £	PRICE €	H	W	D	POWER	WT
CG6/N	£1549	€1782	414	600	652	16.4kW	48
CG6/P	£1549	€1782	414	600	652	17.6kW	48

## Electric Chargrills

- High heat retention of cast iron grids means there is no waiting for the grill to recover to cooking temperature
- Hinging interlocked elements and integral water bath make cleaning easier
- Integral splashguard with water funnel enables refilling of tank without cooling the cooking grid
- Water bath provides humidity, keeping food succulent and reducing shrinkage
- High temperature safety cut out for protection if water bath runs dry
- ECG9/WT features water connection for ease of use



Electric chargrill							
MODEL	PRICE £	PRICE €	H	W	D	POWER	WT
*ECG6	£1438	€1654	385	600	620	8kW	41
*ECG9	£2331	€2681	385	900	620	13.3kW	67
*ECG9/WT	£2712	€3119	385	900	620	13.3kW	67

## Electric Pasta Boilers

- Front mounted controls ensure safe working practice
- Hinging element with safety cut out provides easy access to tank for cleaning
- Front drain taps for fast, easy drainage of water
- Thermostatic control maintains accurate water temperature
- Corrosion-resistant stainless steel tanks and elements for long service life



Single tank pasta boiler							
MODEL	PRICE £	PRICE €	H	W	D	POWER	WT
PB33	£704	€810	330	300	600	3kW	15

Twin tank pasta boiler							
MODEL	PRICE £	PRICE €	H	W	D	POWER	WT
PB66	£1195	€1375	330	600	600	2x3kW	27

Price does not include basket

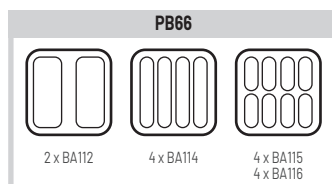
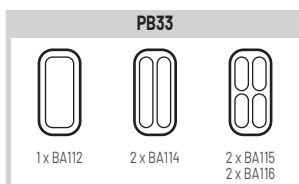
Price does not include basket  
Supplied with two cables & plugs for easy installation

### Pasta Baskets

MODEL	PRICE £	PRICE €	W	PB33 NO. REQUIRED
A BA112	£137	€158	202	1
A BA114	£120	€138	101	2
A BA115+ BB116 (each)	£99 (each)	€114 (each)	101	2 of each

### Pasta Baskets

MODEL	PRICE £	PRICE €	W	PB33 NO. REQUIRED
A BA112	£137	€158	202	1
A BA114	£120	€138	101	2
A BA115+ BB116 (each)	£99 (each)	€114 (each)	101	4 of each



**2 YEAR**  
UK parts and labour warranty  
Export parts warranty  
on all Lincat products

### Key

- H = Height (mm)
- W = Width (mm)
- D = Depth (mm)
- WT = Packed Weight in kg

### Product Codes

/N = natural gas /P = propane gas Btu/hr = kW x 3412